



2015 USA CYCLING NATIONAL CHAMPIONSHIPS



TRAFFIC CONTROL PLAN

INDEX:

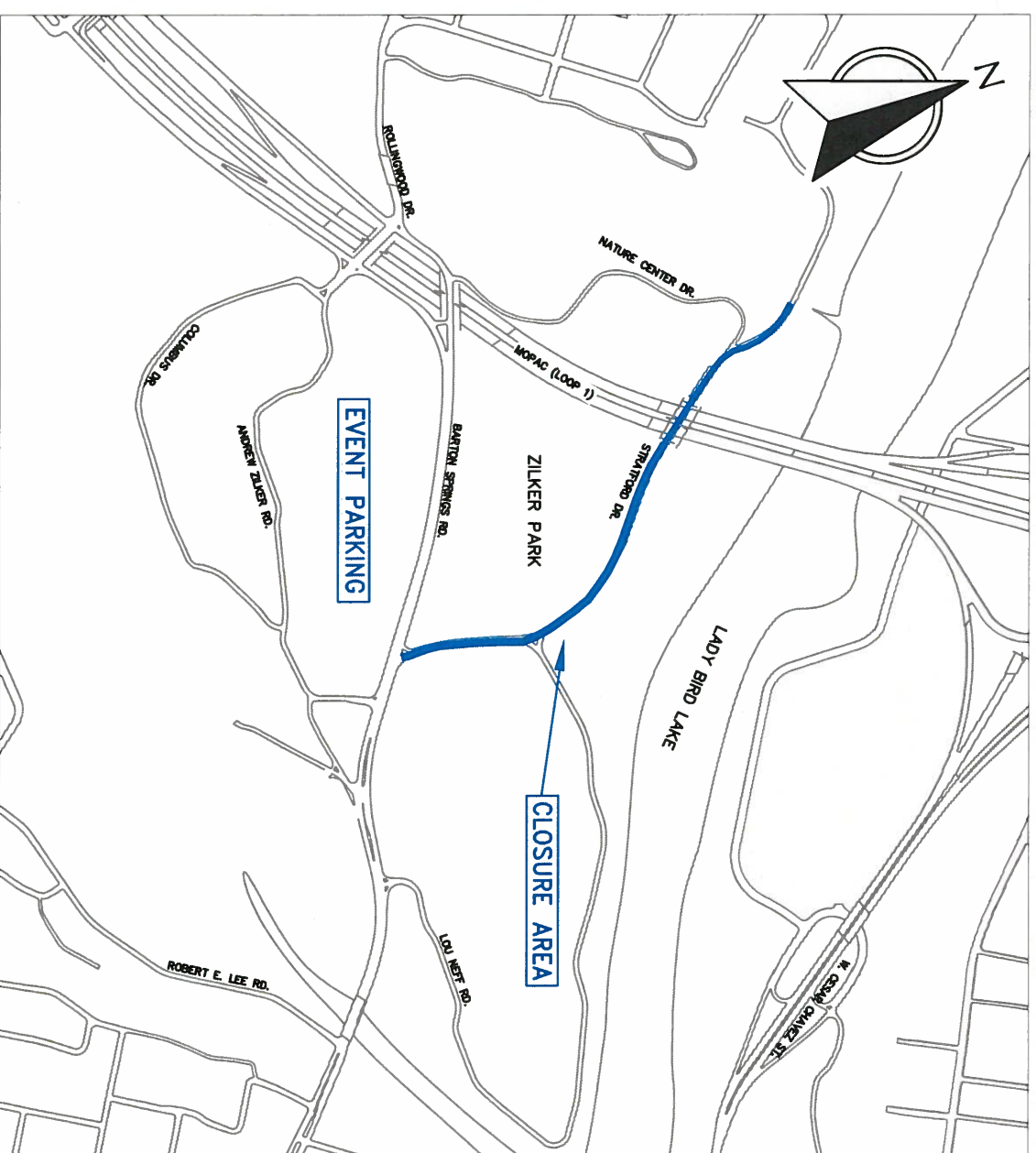
GENERAL NOTES: 01
 TRAFFIC CONTROL SHEETS: 02 - 05
 RESTRICTED PARKING SET UP SHEET: 06
 DMS LOCATIONS

CONTACT INFORMATION:

Barricade Company: Turnkey Operations
 Contact Person & Cell Phone: German Chavarria - 512-801-8928
 Promoter Company: Cadence Sports
 Contact Person & Cell Phone: Gary Metcalf - 214-632-0119
 APD Contact Person & Cell Phone: Off. Patrick Nelsen - 978-618-0291
 City of Austin Contact: Office of Special Events
 Contact Person & Cell Phone: Cara Fisher 469-556-7785

PLAN INFORMATION:

REVIEW	REVIEWER	DATE
1	D. HUNTER	12/15/2014



SCALE: 1" = 900'

PREPARED BY:
City of Austin

AUSTIN TRANSPORTATION DEPARTMENT
 OFFICE OF SPECIAL EVENTS DIVISION
 505 BARTON SPRINGS ROAD, SUITE 1070
 AUSTIN, TEXAS 78704
 Ph. (512) 974-7071, Fax: (512) 974-5617

WEDNESDAY JANUARY 7th TO SUNDAY JANUARY 11th, EVENT TIMES:
 EVENT BEGINS AT: 8:00 a.m. DAILY
 EVENT ENDS AT: 5:00 p.m. DAILY

TRAFFIC CONTROL SETUP FOR JAN 7th - JAN 11th (PAGE 2):

TRAFFIC CONTROL SETUP BEGINS: JAN 7th AT 6:00 a.m.
 TRAFFIC CONTROL SETUP COMPLETED: 7:00 a.m.
 TRAFFIC CONTROL PICKUP BEGINS: JAN 11th AT 5:30 p.m.
 TRAFFIC CONTROL PICKUP COMPLETED: 6:30 p.m.

TRAFFIC CONTROL SETUP FOR JAN 11th (PAGE 3-5):

TRAFFIC CONTROL SETUP BEGINS: JAN 11th AT 11:00 a.m.
 TRAFFIC CONTROL SETUP COMPLETED: NOON
 TRAFFIC CONTROL PICKUP BEGINS: 5:30 p.m.
 TRAFFIC CONTROL PICKUP COMPLETED: 6:30 p.m.

RESTRICTED PARKING SETUP FOR JAN 5th (PAGE 6):

RESTRICTED PARKING SIGNS SETUP BEGINS: JAN 6th AT 8:00 a.m.
 SETUP COMPLETED: 10:00 a.m.

RESTRICTED PARKING SIGNS PICKUP BEGINS: JAN 11th AT 5:30 p.m.
 TRAFFIC CONTROL PICKUP COMPLETED: 7:30 p.m.



NOTES:

1. THIS TRAFFIC CONTROL PLAN MAY BE USED MULTIPLE DAYS AT THE DIRECTION OF RIGHT OF WAY MANAGEMENT, AS LONG AS REVIEW OF CLOSURES AND TRAFFIC CONTROL MEET CURRENT CONDITIONS AND STANDARDS.
2. ANY CHANGES TO CLOSURES OR CURRENT CONDITIONS AT TIME OF EVENT WILL REQUIRE REVIEW BY ENGINEER OF RECORD FOR AMENDMENTS TO THIS PLAN.
3. SETUP TIMES OF ALL TRAFFIC CONTROL SHALL BE DETERMINED BY RIGHT OF WAY MANAGEMENT.
4. ALL DEVICE SPACING SHALL BE IN ACCORDANCE WITH 804S-1, 9 OF 9 UNLESS OTHERWISE NOTED.
5. THIS TRAFFIC CONTROL PLAN IS FOR A CYCLING COMPETENCE TO BE PERMITTED BY THE CITY OF AUSTIN.
6. THIS CYCLING COMPETENCE SHALL NOT START UNTIL AUSTIN POLICE DEPARTMENT AND RIGHT OF WAY MANAGEMENT ARE IN AGREEMENT THAT ALL THE DEVICES AND OFFICERS ARE IN POSITION.
7. SIGNS SHALL BE MOUNTED AT THE STANDARD 7' HEIGHT.
8. ALL SIGNS AND BARRICADES SHALL HAVE SAND BAGS AS BALLAST.

Disclaimer:

This product is for informational purposes and may not have been prepared for or be suitable for legal, engineering, or surveying purposes. It does not represent an on-the-ground survey and represents only the approximate relative location of property boundaries.

This product has been produced by the Austin Transportation Department for the sole purpose of geographic reference. No warranty is made by the City of Austin regarding specific accuracy or completeness.

ITEM	QTY.	DESCRIPTION
2015 USA CYCLING NATIONAL CHAMPIONSHIPS / RESTRICTED PARKING / TTC DEVICE COUNT		
TYPE III BARRICADE	5	Type III Barricade
NO PARKING SIGN	62	"No Parking This Block This side of Street" With Tow Away Placard
NO EVENT PARKING SIGN	5	"No Event Parking in the Neighborhood"
TOTAL	72	

DEVICE SPACING

Posted Speed (MPH)	Formula	Typical Transition Lengths and Suggested Maximum Spacing of Devices			Suggested Max. Device Spacing Meters (Feet)	Suggested Sign Spacing Meters (Feet)	
		Minimum Desirable Taper Lengths (L) Meters (Feet)	3.0(10)	3.3(11)			3.6(12)
50 (30)	L=WS ² 60	45 (150)	50 (165)	55 (180)	9 (30)	15-20 (60-75)	40 (120)
55 (35)		65 (205)	70 (225)	75 (245)	10 (35)	25-25 (70-90)	50 (160)
65 (40)		80 (265)	90 (295)	100 (320)	12 (40)	25-30 (80-100)	75 (240)
70 (45)	L=WS	135 (450)	185 (495)	185 (540)	13 (45)	25-30 (90-110)	100 (320)
80 (50)		150 (500)	165 (550)	180 (600)	15 (50)	30-35 (100-125)	120 (400)
90 (55)		165 (550)	185 (605)	200 (660)	16 (55)	35-40 (110-140)	150 (500)
100 (60)		180 (600)	200 (660)	220 (720)	18 (60)	40-45 (120-150)	180 (600)
105 (65)		195 (650)	215 (715)	235 (780)	19 (65)	40-50 (130-165)	210 (700)
115 (70)		215 (700)	235 (770)	255 (840)	21 (70)	45-55 (140-175)	240 (800)

ITEM	QTY.	DESCRIPTION
2015 USA CYCLING NATIONAL CHAMPIONSHIPS / TTC DEVICE COUNT		
APD	5	Austin Police Department Officer
CONE	518	28" Traffic Cone
SIGN	25	Sign Post Location
BARRICADE-I	4	Type I Barricade
BARRICADE-III	13	Type III Barricade
DRUMS	16	Plastic Drums
CW3-4	4	Be Prepared To Stop
CW-11-2	4	Pedestrian Crossing
CW20-3D	1	Road Closed Ahead
CW20-5DR	4	Right Lane Closed Ahead
FAB	2	Flashing Arrow Board
R3-5R	1	Right Turn Only
R11-2	5	Road Closed
R11-4	1	Road Closed To Thru Traffic
PCMS	4	Message Board
WATCH FOR CYCLISTS	1	Watch For Cyclists
VIP PARKING ONLY	1	VIP Parking Only Sign (40" x 48")
SPECIAL EVENT AHEAD	4	Special Event Ahead
TOTAL	65	DOES NOT INCLUDE APD, CONES AND SIGN POST COUNT



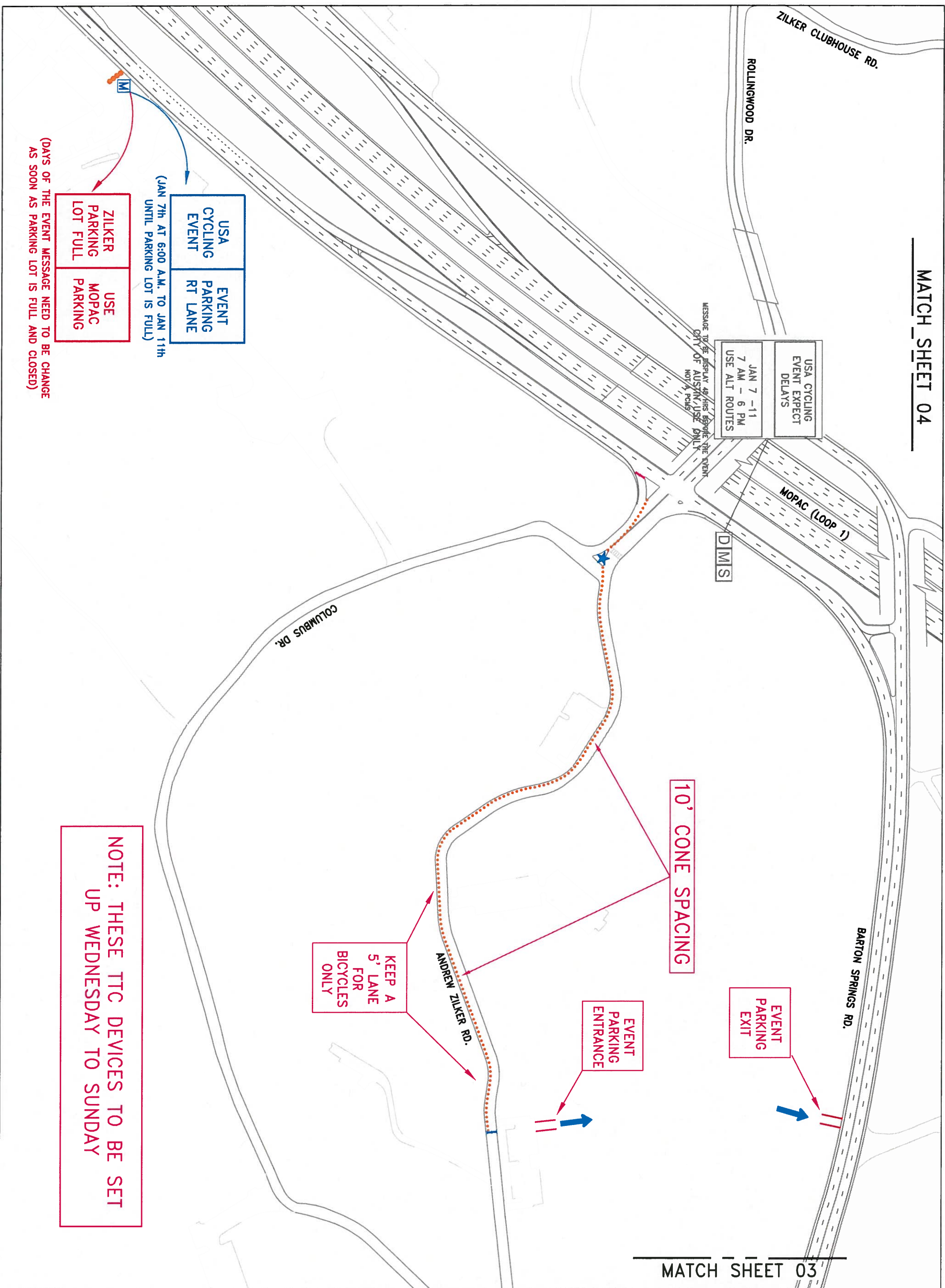
**TRAFFIC CONTROL PLAN
2015 USA CYCLING
NATIONAL CHAMPIONSHIPS
GENERAL NOTES**

CITY OF AUSTIN, 505 BARTON SPRINGS ROAD
SUITE 1070, AUSTIN, TEXAS 78704

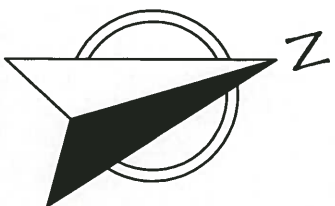
DESIGNED BY: J. OLVERA

DATE: Dec. 19, 2014





MATCH SHEET 03



SCALE: 1"=200'

TRAFFIC CONTROL PLAN
2015 USA CYCLING NATIONAL CHAMPIONSHIPS
 SETUP WEDNESDAY TO SUNDAY

CITY OF AUSTIN, 505 BARTON SPRINGS ROAD
 SUITE 1070 AUSTIN, TEXAS 78704

DESIGNED BY: J. OLVERA

DATE: Dec. 16, 2014

- 28-INCH CONE
- DRUM, EDGE LINE DELINEATOR
- ▬ TYPE III BARRICADE
- ★ APD OFFICER
- PCMS
- DIMS C. O. A. DYNAMIC MESSAGE SIGN



(DAYS OF THE EVENT MESSAGE NEED TO BE CHANGE AS SOON AS PARKING LOT IS FULL AND CLOSED)

(JAN 7th AT 6:00 A.M. TO JAN 11th UNTIL PARKING LOT IS FULL)

USA CYCLING EVENT	EVENT PARKING RT LANE
ZILKER PARKING LOT FULL	USE MOPAC PARKING

USA CYCLING EVENT EXPECT DELAYS
JAN 7 - 11 7 AM - 6 PM USE ALT ROUTES

MESSAGE TO BE DISPLAYED AT THE EVENT CITY OF AUSTIN/USE DIMS NOT PCMS

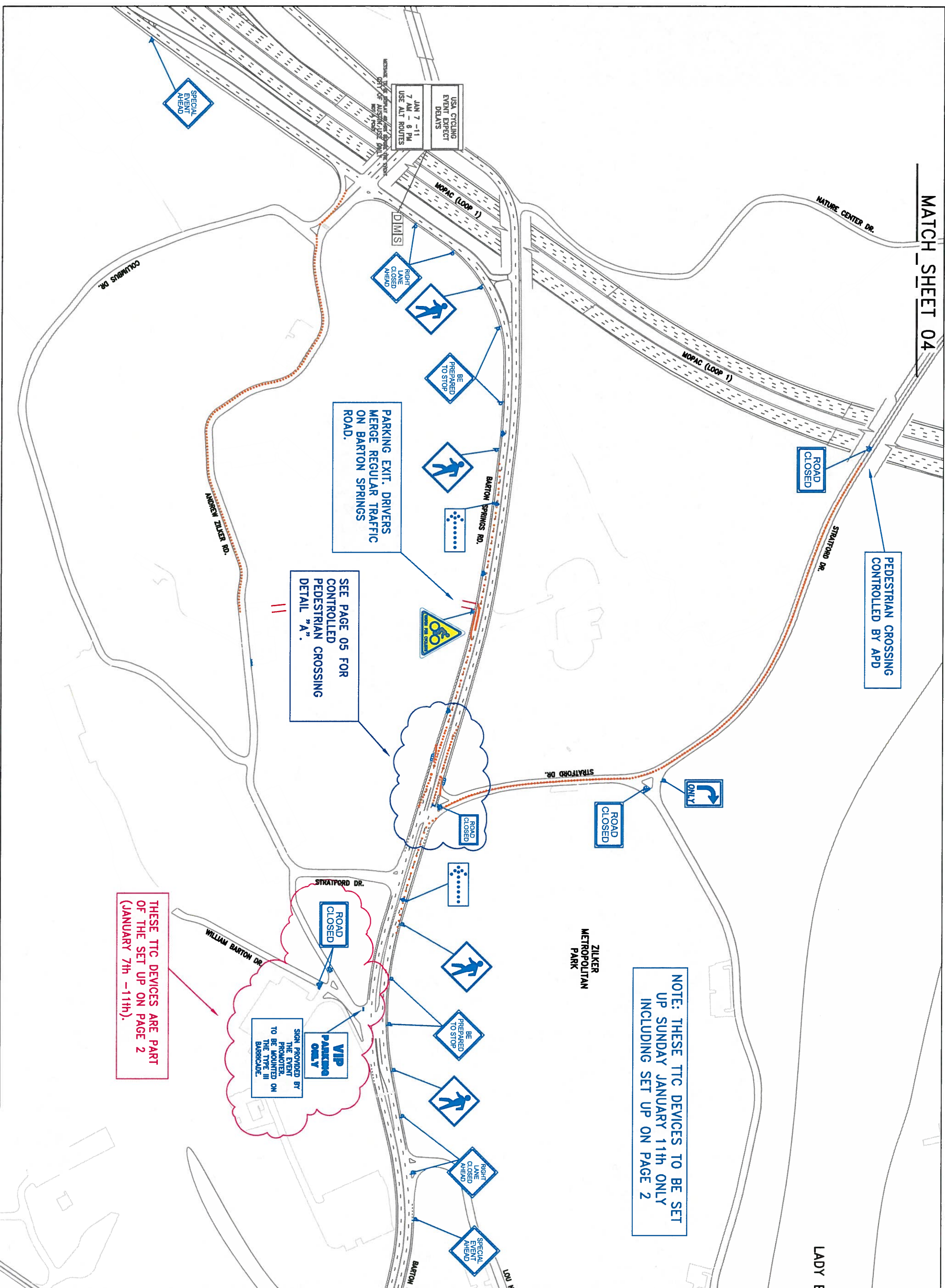
KEEP A 5' LANE FOR BICYCLES ONLY

10' CONE SPACING

EVENT PARKING EXIT

EVENT PARKING ENTRANCE

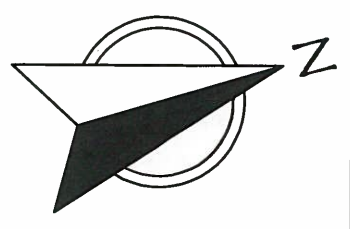
NOTE: THESE TTC DEVICES TO BE SET UP WEDNESDAY TO SUNDAY



TRAFFIC CONTROL PLAN
**2015 USA CYCLING
 NATIONAL CHAMPIONSHIPS**
 SETUP FOR SUNDAY JAN 11th ONLY
 CITY OF AUSTIN, 505 BARTON SPRINGS ROAD
 SUITE 1070, AUSTIN, TEXAS 78704

DESIGNED BY: J. OLVERA DATE: Dec. 16, 2014

SCALE: 1"=300'

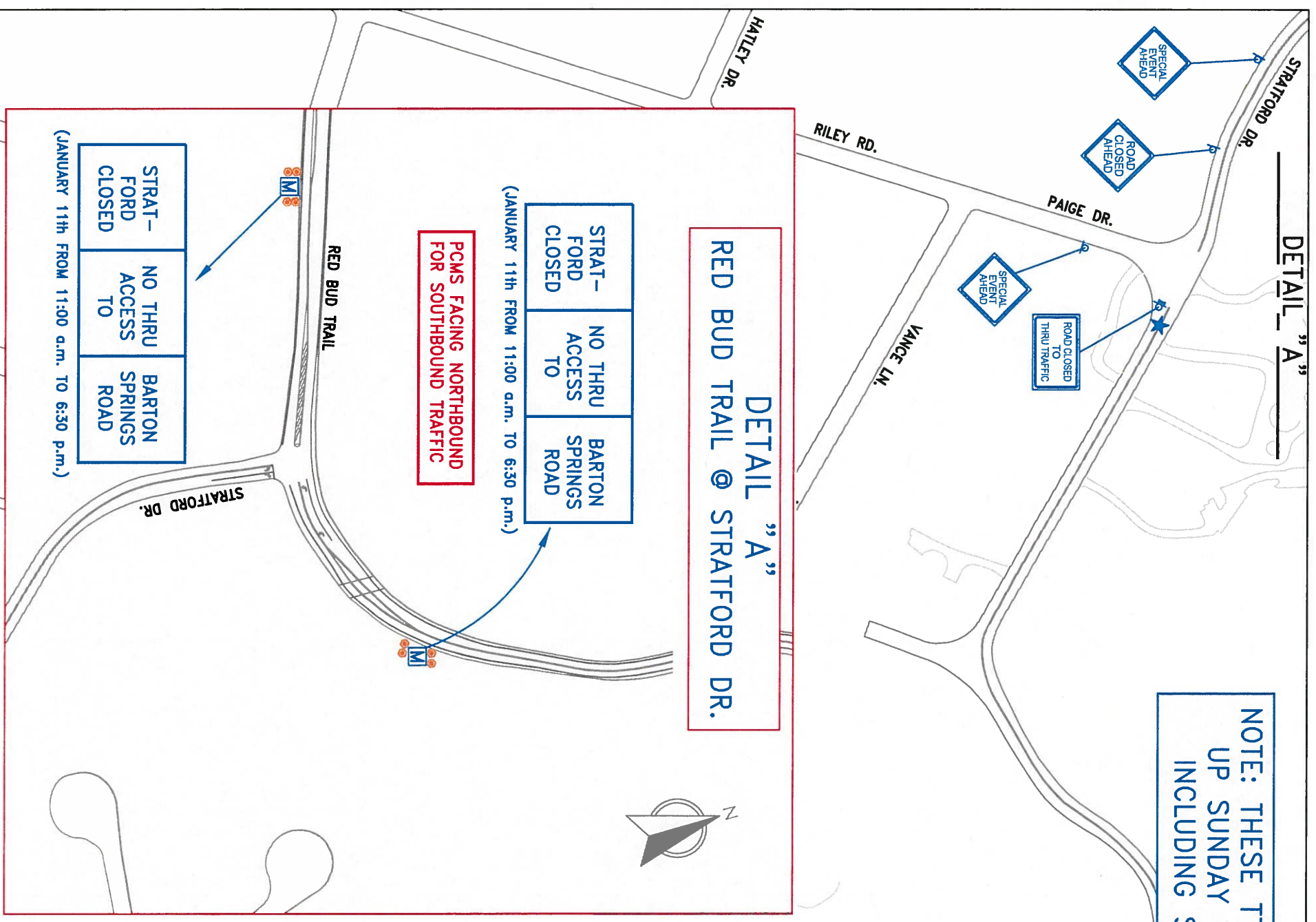


- ARROWBOARD
- SIGN
- 42-INCH GRIPPER
- 28-INCH CONE
- DRUM, EDGE LINE DELINEATOR
- TYPE I BARRICADE
- TYPE III BARRICADE
- APP OFFICER
- PCMS
- DMIS C.O.A. DYNAMIC MESSAGE SIGN



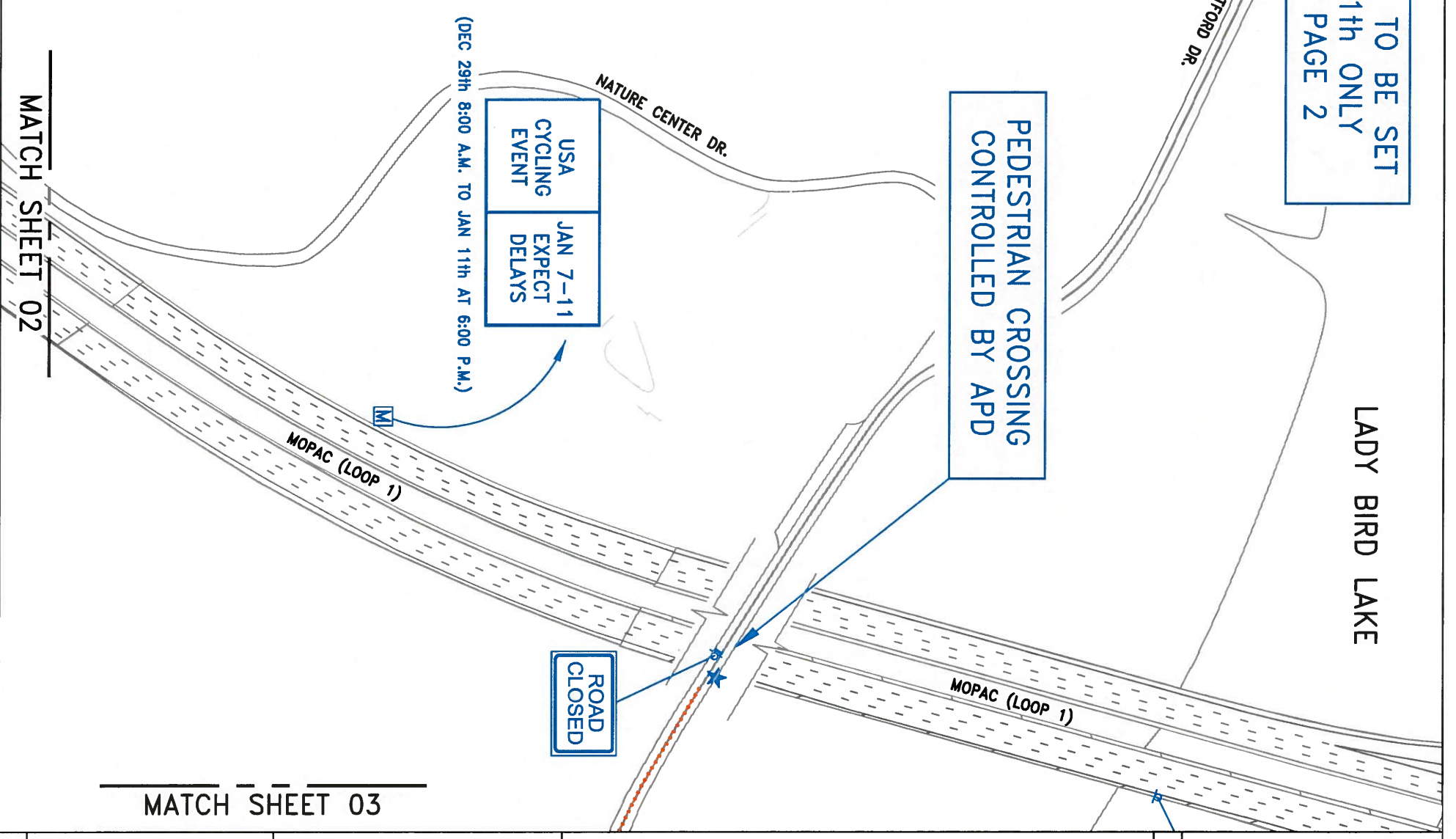
DETAIL "A"

NOTE: THESE TTC DEVICES TO BE SET UP SUNDAY JANUARY 11th ONLY INCLUDING SET UP ON PAGE 2



PEDESTRIAN CROSSING CONTROLLED BY APD

LADY BIRD LAKE



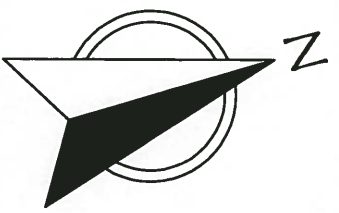
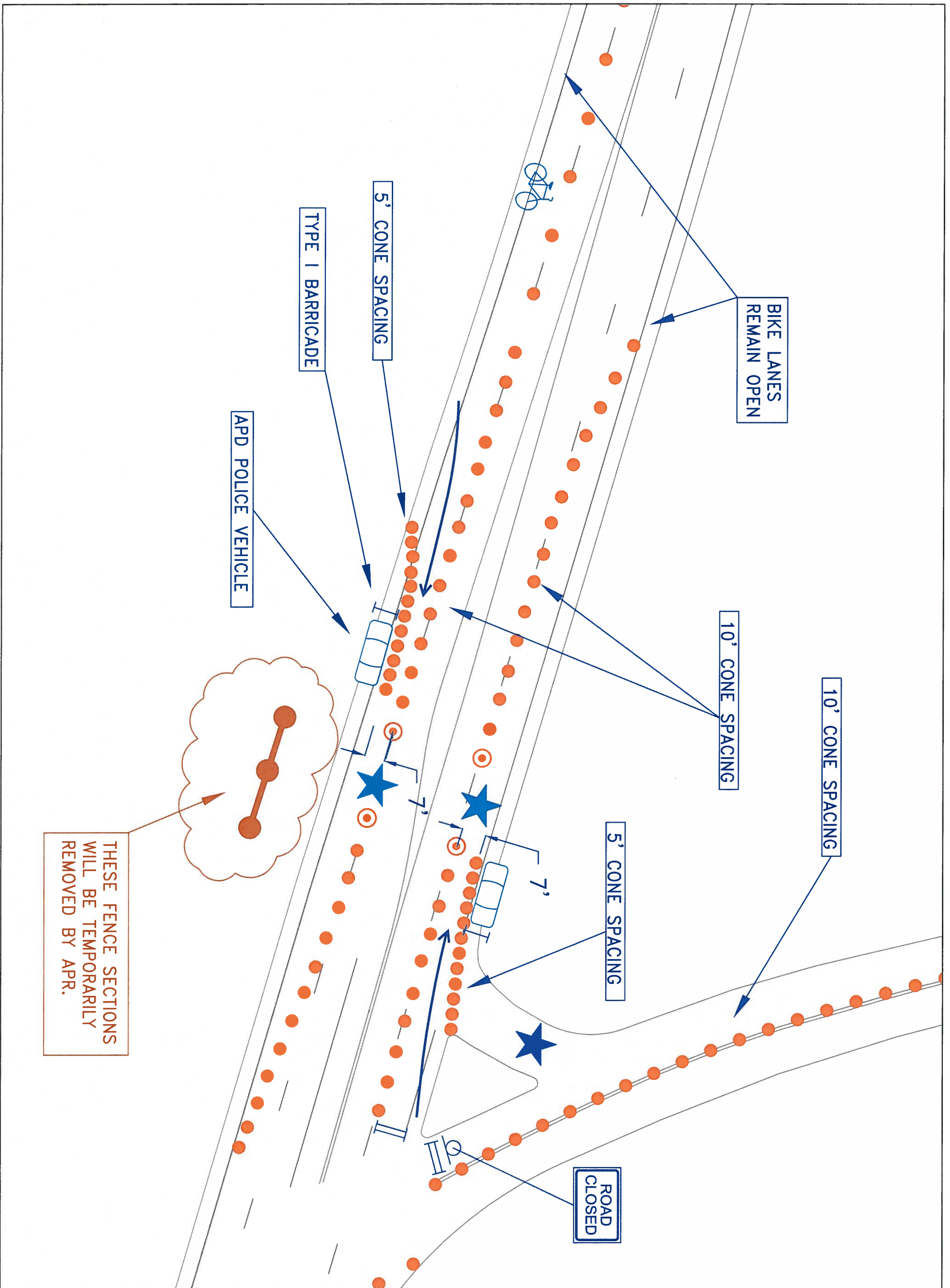
SCALE: 1"=200'

TRAFFIC CONTROL PLAN
2015 USA CYCLING NATIONAL CHAMPIONSHIPS
 SETUP FOR SUNDAY JAN 11th ONLY
 CITY OF AUSTIN, 505 BARTON SPRINGS ROAD
 SUITE 1070, AUSTIN, TEXAS 78704
 DESIGNED BY: J. OLVERA DATE: Dec. 16, 2014

- ARROWBOARD SIGN
- 28-INCH CONE
- DRUM, EDGE LINE DELINEATOR
- TYPE I BARRICADE
- TYPE III BARRICADE
- APP OFFICER
- PCMS
- DIMS C.O.A. DYNAMIC MESSAGE SIGN

STATE OF TEXAS
 LICENSED PROFESSIONAL ENGINEER
 93310
 WARNER GORDON DERR

 SHEET 04 OF 06



SCALE: 1"=30'

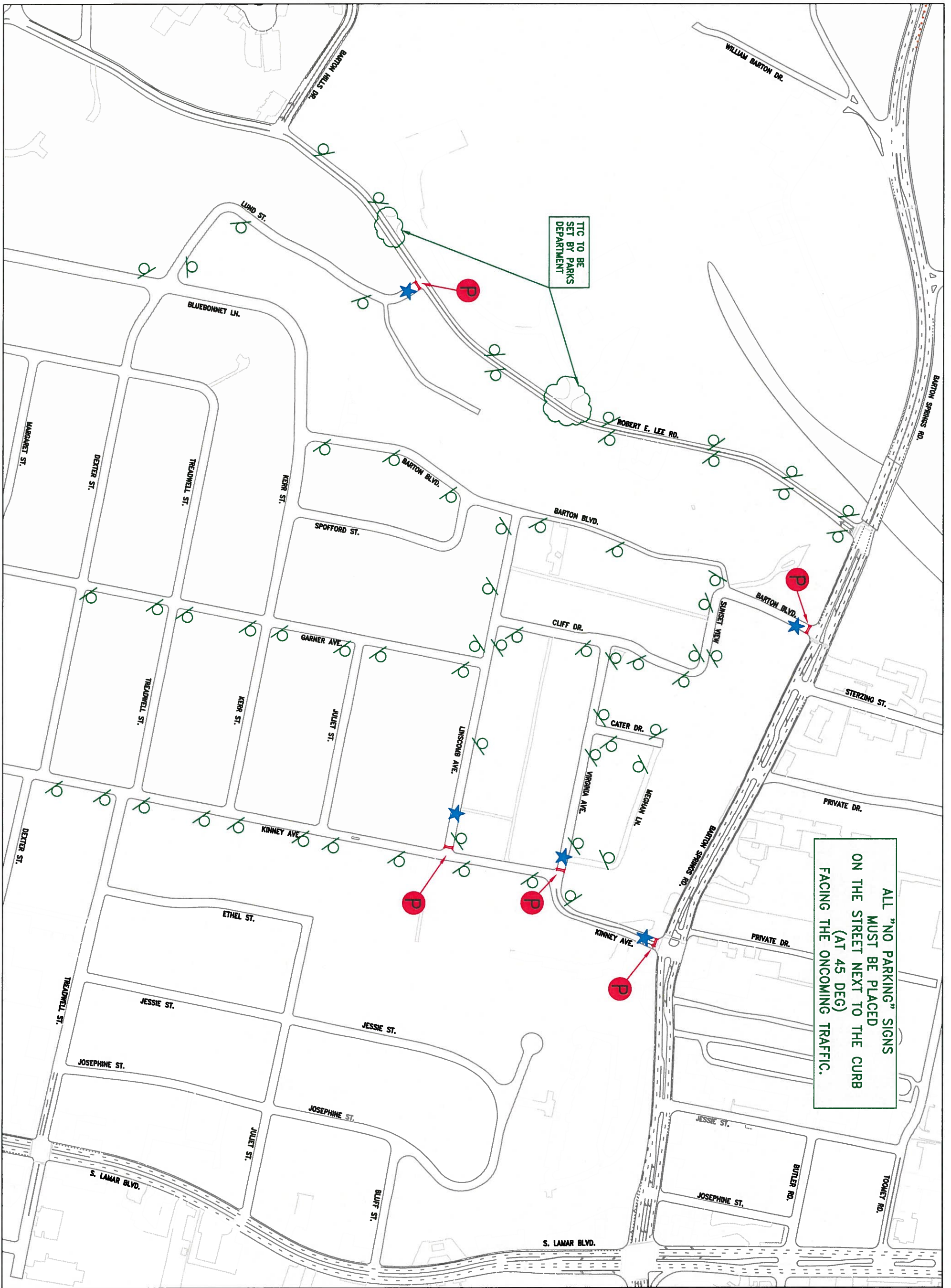
TRAFFIC CONTROL PLAN
 2015 USA CYCLING
 NATIONAL CHAMPIONSHIPS
 DETAIL "A" FOR SUNDAY JAN 11th ONLY
 CITY OF AUSTIN, 505 BARTON SPRINGS ROAD
 SUITE 1070, AUSTIN, TEXAS 78704

DESIGNED BY: J. OLVERA

DATE: Dec. 16, 2014

- ARROWBOARD
- SIGN
- 28-INCH CONE
- DRUM, EDGE LINE DELINEATOR
- TYPE I BARRICADE
- TYPE III BARRICADE
- APD OFFICER





ALL "NO PARKING" SIGNS
MUST BE PLACED
ON THE STREET NEXT TO THE CURB
(AT 45 DEG)
FACING THE ONCOMING TRAFFIC.

TTC TO BE
SET BY PARKS
DEPARTMENT

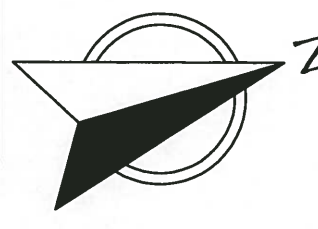


SHEET 06 OF 06

 NO EVENT PARKING IN THE NEIGHBORHOOD
 NO EVENT PARKING IN THE NEIGHBORHOOD
 APPD


TRAFFIC CONTROL PLAN
2015 USA CYCLING
NATIONAL CHAMPIONSHIPS
RESTRICTED PARKING SET UP
CITY OF AUSTIN, 505 BARTON SPRINGS ROAD
SUITE 1070, AUSTIN, TEXAS 78704
DESIGNED BY: J. OLVERA
DATE: Dec. 19, 2014

SCALE: 1"=500'



● DMS NUMBER: 1
LOCATION: E. CESAR CHAVEZ ● RED RIVER ST.

MESSAGE TO BE DISPLAYED:

NOT USED

● DMS NUMBER: 2
LOCATION: W. CESAR CHAVEZ ● BR. RENOLDS ST.

MESSAGE TO BE DISPLAYED:

NOT USED

● DMS NUMBER: 3
LOCATION: W. 5th ST. ● WEST LYNN ST.

MESSAGE TO BE DISPLAYED:

NOT USED

● DMS NUMBER: 4
LOCATION: GUADALUPE ST. ● W. 13th ST.

MESSAGE TO BE DISPLAYED:

NOT USED

● DMS NUMBER: 5
LOCATION: N. LAMAR ● W. 15th ST.

MESSAGE TO BE DISPLAYED:

NOT USED

● DMS NUMBER: 6
LOCATION: W. N. LAMAR BLVD. ● W. 24th ST.

MESSAGE TO BE DISPLAYED:

NOT USED

● DMS NUMBER: 7
LOCATION: E. RIVERSIDE DR. ● S. LAKESHORE BLVD.

MESSAGE TO BE DISPLAYED:

NOT USED

● DMS NUMBER: 8
LOCATION: S. MOPAC (LOOP 1) ● BARTON SPRINGS RD.

MESSAGE TO BE DISPLAYED:

USA CYCLING EVENT EXPECT DELAYS	JAN 7-11 7 AM - 6 PM USE ALT ROUTES
---------------------------------------	---

JANUARY 5th AT 8:00 A.M. - JANUARY 11th AT 6:00 P.M.

CITY OF AUSTIN DYNAMIC MESSAGE SIGN LOCATIONS

FOR CITY USE ONLY
2015 USA CYCLING NATIONAL CHAMPIONSHIPS JANUARY 7th - 11th, 2014



● **DMS NUMBER: 9**
 LOCATION: S. 1ST ● COPELAND ST.

MESSAGE TO BE DISPLAYED:

● **DMS NUMBER: 10**
 LOCATION: S. LAMAR BLVD. ● DICKSON DR.

MESSAGE TO BE DISPLAYED:

● **DMS NUMBER: 11**
 LOCATION: S. 1ST ST ● EMERALD WOOD DR.

MESSAGE TO BE DISPLAYED:

● **DMS NUMBER: 12**
 LOCATION: N. LAMAR BLVD. ● GUADALUPE ST.

MESSAGE TO BE DISPLAYED:

● **DMS NUMBER: 13**
 LOCATION: N. LAMAR BLVD. MORROW ST.

MESSAGE TO BE DISPLAYED:



CITY OF AUSTIN DYNAMIC MESSAGE SIGN LOCATIONS

FOR CITY USE ONLY
 2015 USA CYCLING NATIONAL CHAMPIONSHIPS JANUARY 7th - 11th, 2014

