

**TRANSPORTATION  
DESIGN  
CONSULTANTS**  
166 MOCCASIN CANYON  
CEDAR CREEK TX 78612  
512-507-6004

LOC CONSULTANTS LLP  
F-4756  
1000 E. CESAR CHAVEZ  
AUSTIN TX 78702  
512-499-0908

**AUSTIN CITY LIMITS  
MUSIC FESTIVAL 2012**  
INSTALL OCTOBER 12, 2012 12:01 AM



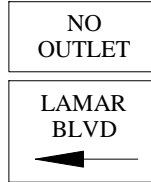
LOC CONSULTANTS LLP  
F-4756

PAGE  
9

NOT TO  
SCALE

© COPYRIGHT 2012  
TRANSPORTATION  
DESIGN CONSULTANTS

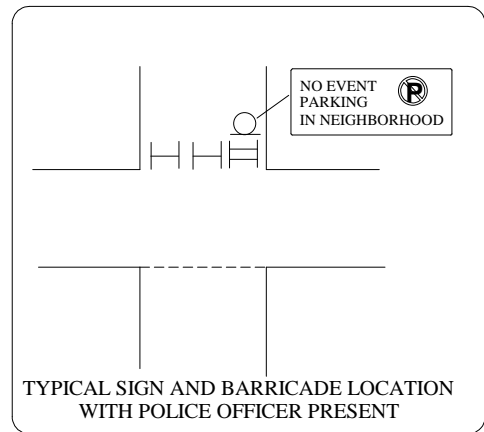
MESSAGE BOARD



SET SIGNS  
OCT 10 AT 9AM



● TYPE III BARRICADE  
★ W/ NO EVENT  
PARKING SIGN  
AND POLICE OFFICER



"NO PARKING TOW AWAY" SIGNS  
SHALL BE PLACED ON FOLLOWING  
STREETS AT 100 FOOT SPACING  
48 HOURS IN ADVANCE AT 9AM  
OCT 10TH

1. CATER DR - VIRGINIA AVE TO MEGHAN LN BOTH SIDES
2. SUNSET VIEW - BARTON BLVD TO CLIFF DR BOTH SIDES
3. BARTON BLVD - BARTON SPRINGS RD TO LINSCOMB BOTH SIDES
4. CLIFF DR - SUNSET TO LINSCOMB EAST SIDE
5. VIRGINIA - CLIFF DR TO KINNEY AVE SOUTH SIDE

SET SIGNS  
OCT 10 AT 9AM



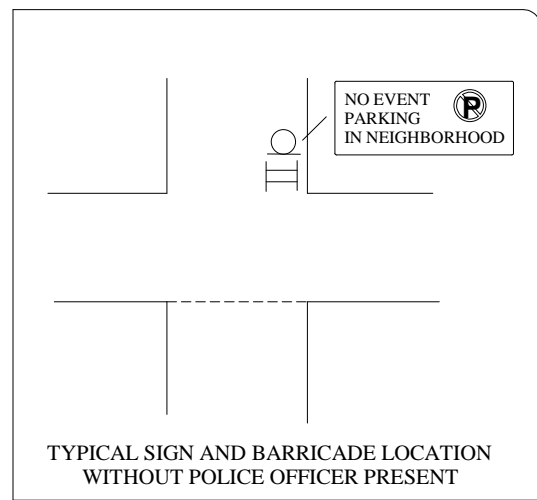
SET SIGNS  
OCT 10 AT 9AM



SET SIGNS  
OCT 10 AT 9AM



● TYPE III BARRICADE  
W/ NO EVENT  
PARKING SIGN



**TRANSPORTATION  
DESIGN  
CONSULTANTS**  
166 MOCCASIN CANYON  
CEDAR CREEK TX 78612  
512-507-6004

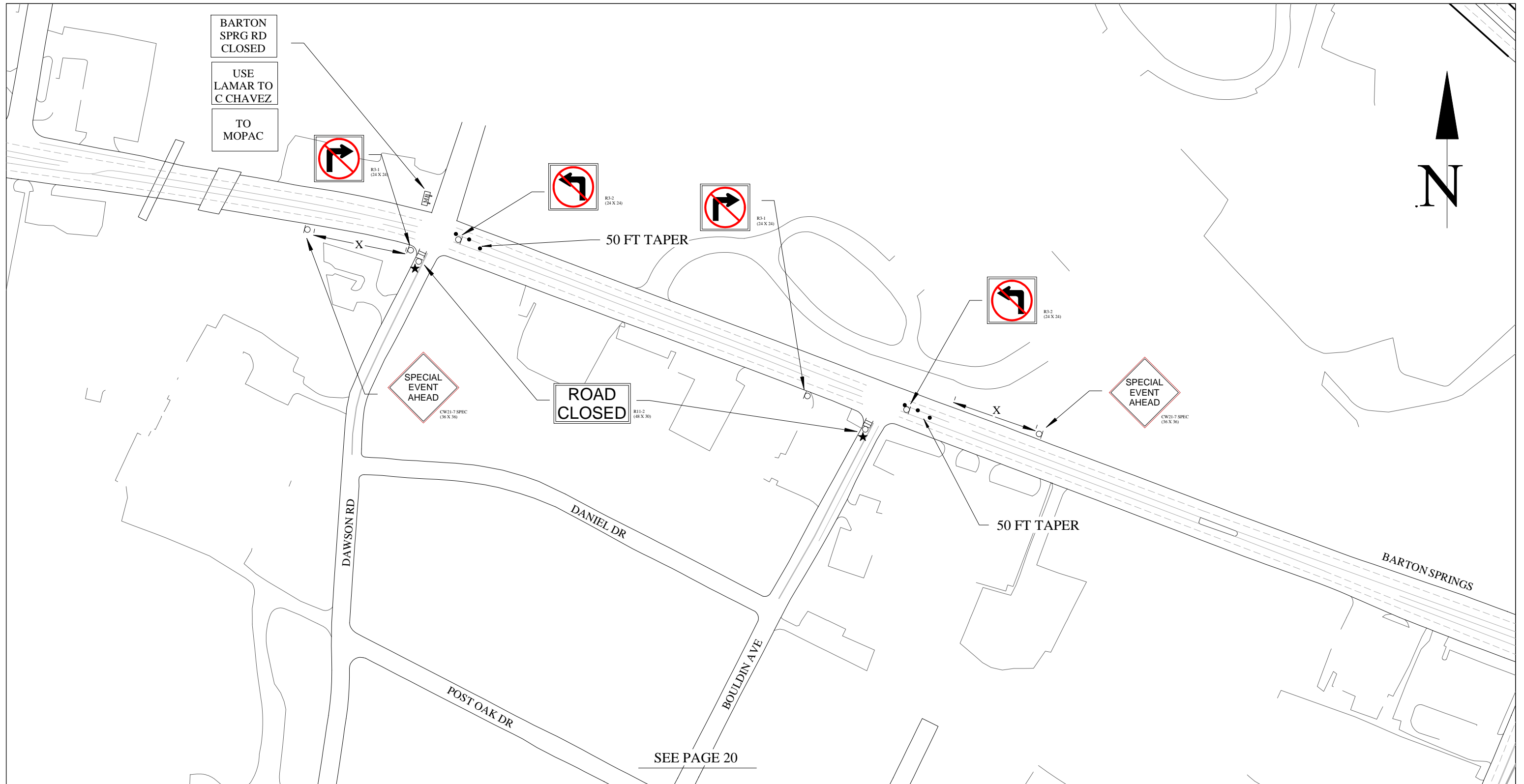
**LOC CONSULTANTS LLP**  
F-4756  
1000 E. CESAR CHAVEZ  
AUSTIN TX 78702  
512-499-0908

**AUSTIN CITY LIMITS  
MUSIC FESTIVAL 2012**  
INSTALL OCTOBER 12, 2012 08:00 AM  
UNLESS OTHERWISE NOTED IN PLAN



LOC CONSULTANTS LLP  
F-4756

PAGE  
18  
NOT TO  
SCALE  
© COPYRIGHT 2012  
TRANSPORTATION  
DESIGN CONSULTANTS



SEE PAGE 20



**TRANSPORTATION  
DESIGN  
CONSULTANTS**  
166 MOCCASIN CANYON  
CEDAR CREEK TX 78612  
512-507-6004

**LOC CONSULTANTS LLP**  
F-4756  
1000 E. CESAR CHAVEZ  
AUSTIN TX 78702  
512-499-0908

**AUSTIN CITY LIMITS  
MUSIC FESTIVAL 2012**  
INSTALL OCTOBER 12, 2012 08:00 AM  
UNLESS OTHERWISE NOTED IN PLAN

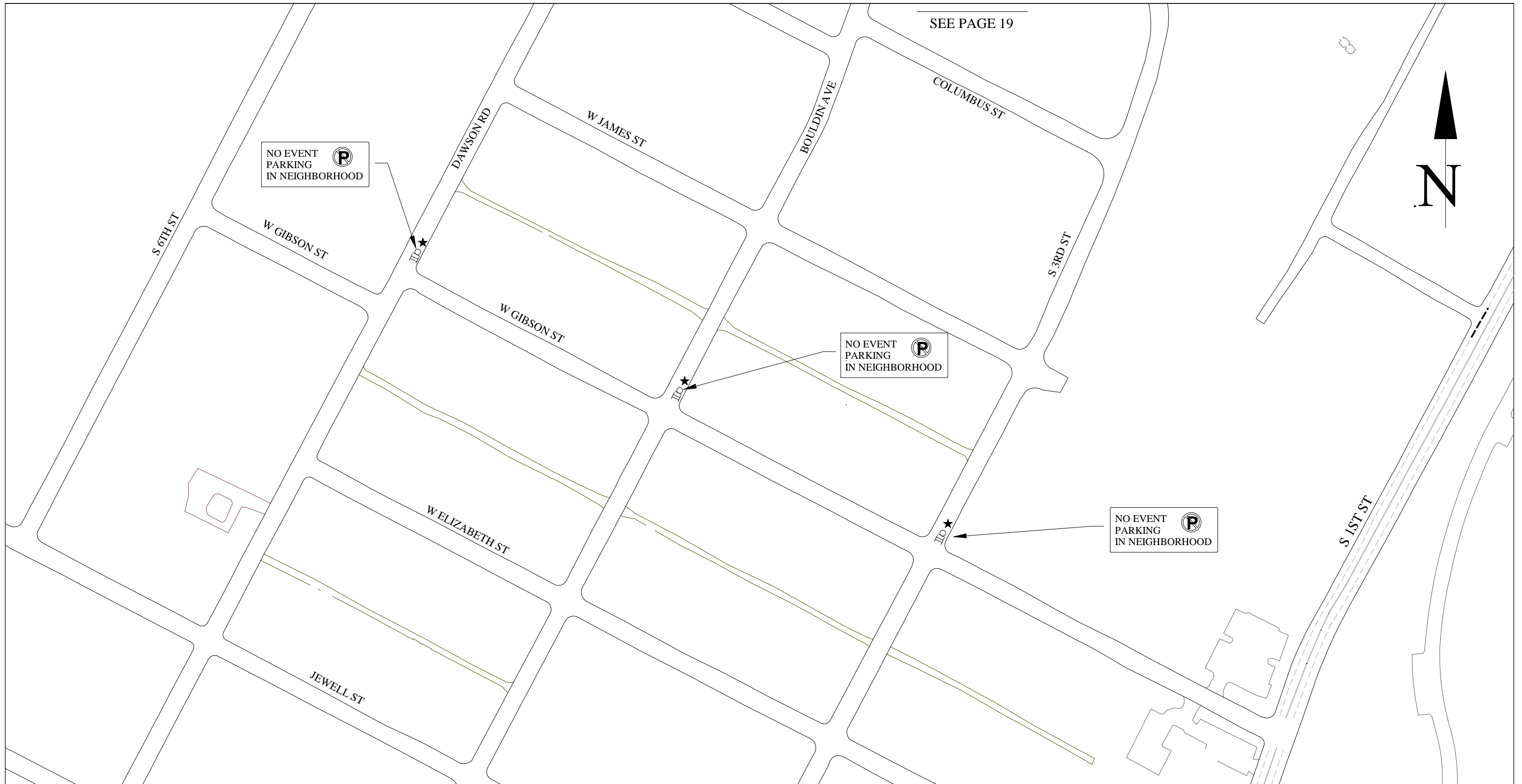


LOC CONSULTANTS LLP  
F-4756

**PAGE  
19**

**NOT TO  
SCALE**

**© COPYRIGHT 2012  
TRANSPORTATION  
DESIGN CONSULTANTS**



**TRANSPORTATION  
DESIGN  
CONSULTANTS**  
166 MOCCASIN CANYON  
CEDAR CREEK TX 78612  
512-507-6004

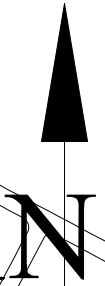
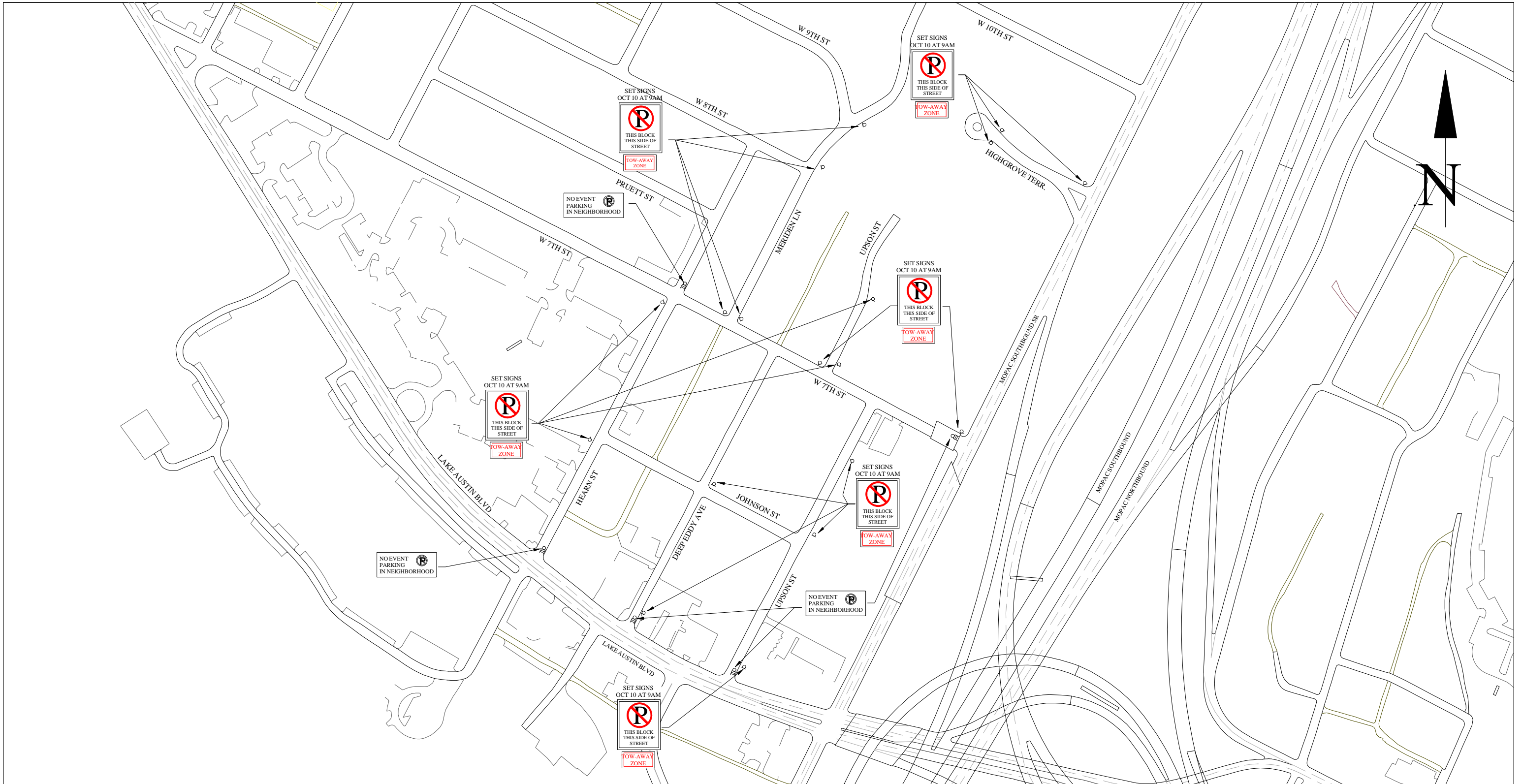
**LOC CONSULTANTS LLP**  
F-4756  
1000 E. CESAR CHAVEZ  
AUSTIN TX 78702  
512-499-0908

**AUSTIN CITY LIMITS  
MUSIC FESTIVAL 2012**  
INSTALL OCTOBER 12, 2012 08:00 AM  
UNLESS OTHERWISE NOTED IN PLAN



LOC CONSULTANTS LLP  
F-4756

**PAGE  
20**  
NOT TO  
SCALE  
© COPYRIGHT 2012  
TRANSPORTATION  
DESIGN CONSULTANTS



**TRANSPORTATION  
DESIGN  
CONSULTANTS**  
166 MOCCASIN CANYON  
CEDAR CREEK TX 78612  
512-507-6004

**LOC CONSULTANTS LLP**  
F-4756  
1000 E. CESAR CHAVEZ  
AUSTIN TX 78702  
512-499-0908

**AUSTIN CITY LIMITS  
MUSIC FESTIVAL 2012**  
INSTALL OCTOBER 12, 2012 08:00 AM  
UNLESS OTHERWISE NOTED IN PLAN



LOC CONSULTANTS LLP  
F-4756

PAGE  
21

NOT TO  
SCALE

© COPYRIGHT 2012  
TRANSPORTATION  
DESIGN CONSULTANTS